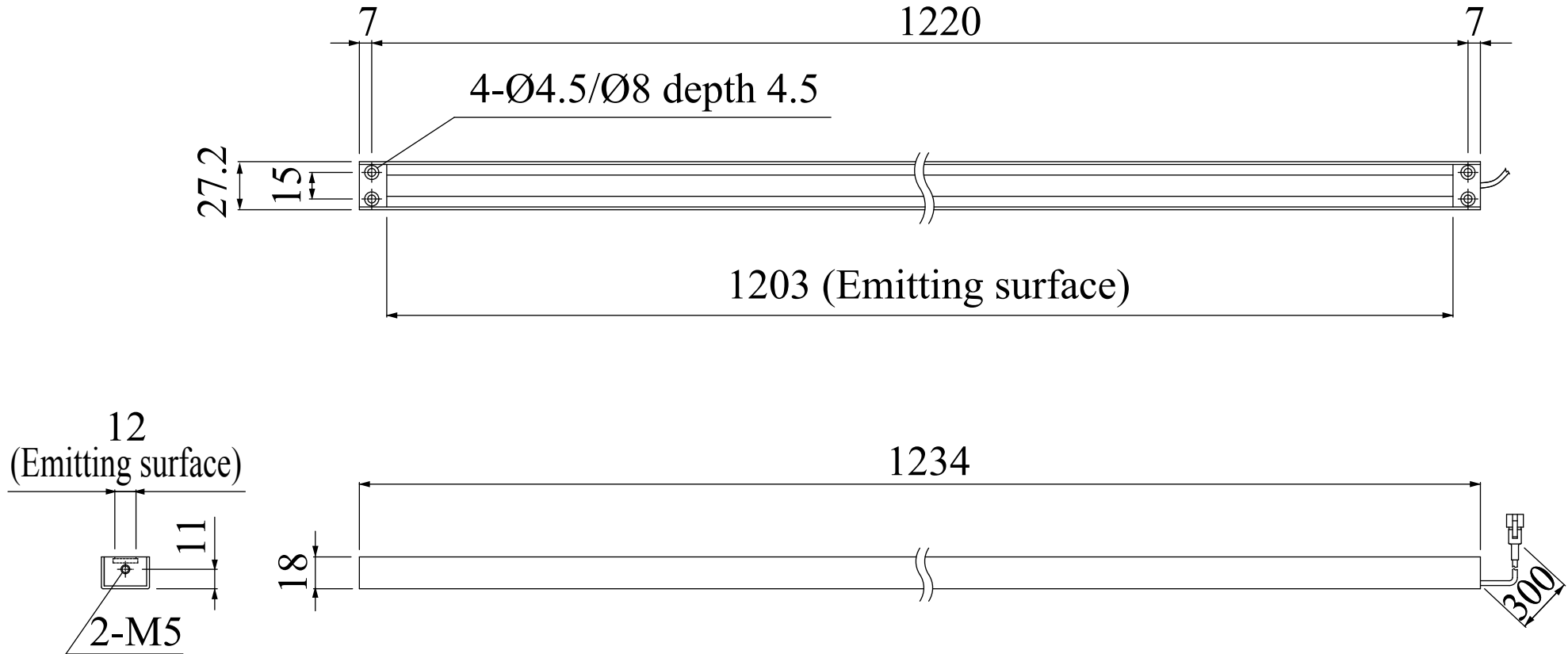


LND-1200H-DF

Model	LND-1200H-DF
Voltage	24V DC
Power consumption	29W
Mass	1300g
Connector type	3P (1: +, 2: NC, 3: -)

Third Angle Projection Units: mm





Line Lights

LND Series

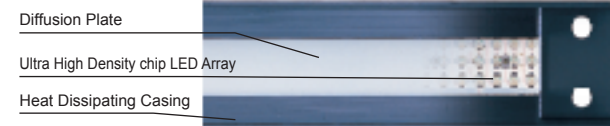
Ideal for web inspection and line-scan applications

Ultra-even illumination developed especially for use with line-scan systems, using a high-density array of high intensity chip LEDs.



LND-H: Ultra high-density mounting

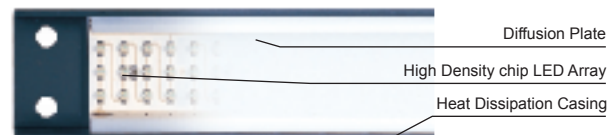
LND-H-DF Series. Chip LEDs are arranged at high density for ultra high-luminosity. More than twice the light intensity of the A Series.



Even though the light emitting surface is only 12 mm, chip LEDs are mounted at extremely high density to produce a bright light. Effective for bright illumination of limited areas, such as small defect inspection.

High luminosity and high uniformity

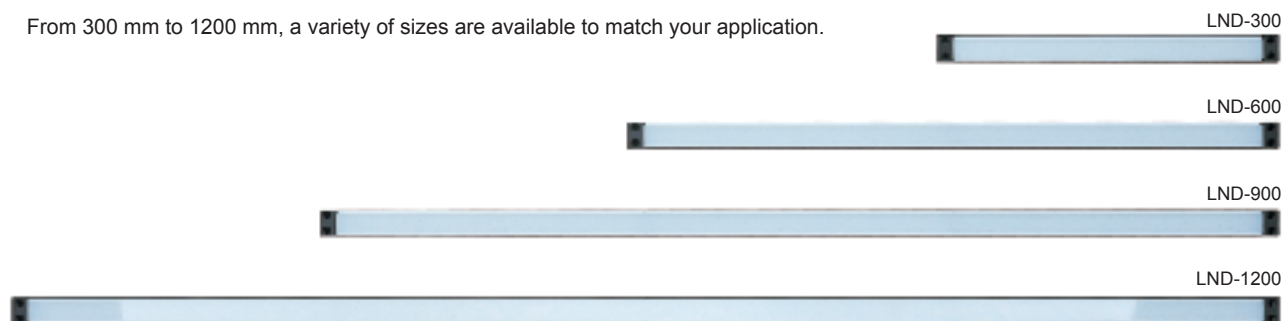
LND-A-DF Series. Chip LEDs are arranged at high density for bright illumination in a compact design.



A light emitting surface of 18 mm makes this an effective light for overall illumination.

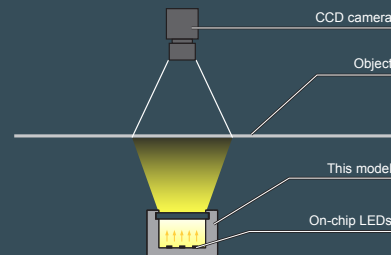
A variety of sizes are available

From 300 mm to 1200 mm, a variety of sizes are available to match your application.



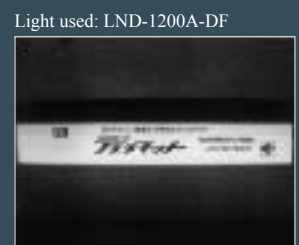
Illumination Structure of LND

Light from the linear mounted on-chip LEDs passes through a diffusion plate to produce a long band of even illumination.



Examples of Line-type Illumination Images

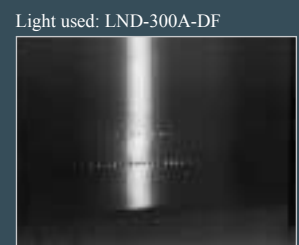
Print Inspection
Printed material, 1150 mm in length, is evenly illuminated along its entire length with a 1200mm line light.



Defect Inspection
A line light is used to illuminate defects in wrapping, creating excellent contrast.



Web Defect Inspection
This shows how line illumination from above makes indentations clearly visible.

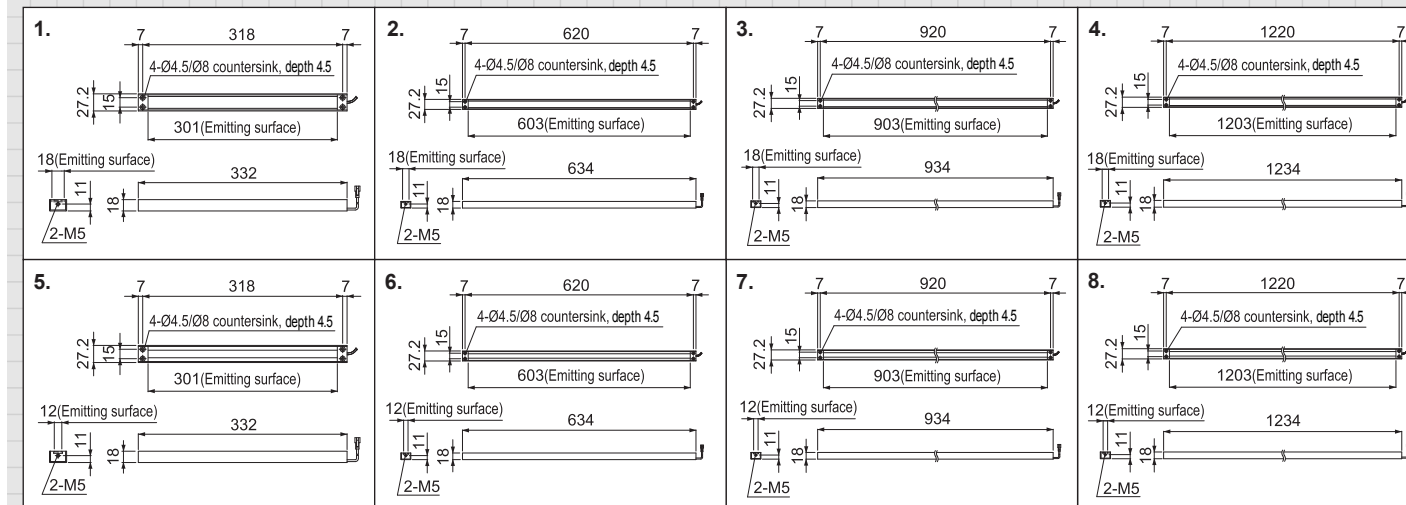


Product Lineup Table

Series	Model Name	Color	Power Consumption	Options	Dimension
LND-A	LND-300A-DF	●	24V/7.2W	—	1
	LND-300A-SW-DF/-GR-DF/-BL-DF	○/●/●	24V/10W	—	
	LND-600A-DF	●	24V/14W	—	2
	LND-600A-SW-DF/-GR-DF/-BL-DF	○/●/●	24V/22W	—	
	LND-900A-DF	●	24V/22W	—	3
	LND-900A-SW-DF/-GR-DF/-BL-DF	○/●/●	24V/30W	—	
	LND-1200A-DF	●	24V/28W	—	4
	LND-1200A-SW-DF/-GR-DF/-BL-DF	○/●/●	24V/40W	—	

Series	Model Name	Color	Power Consumption	Options	Dimension
LND-H	LND-300H-DF	●	24V/7.2W	—	5
	LND-300H-SW-DF/-GR-DF/-BL-DF	○/●/●	24V/13W	—	
	LND-600H-DF	●	24V/14W	—	6
	LND-600H-SW-DF/-GR-DF/-BL-DF	○/●/●	24V/27W	—	
	LND-900H-DF	●	24V/22W	—	7
	LND-900H-SW-DF/-GR-DF/-BL-DF	○/●/●	24V/40W	—	
	LND-1200H-DF	●	24V/29W	—	8

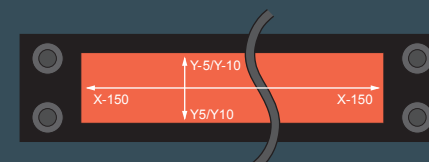
Dimensions (Unit: mm)



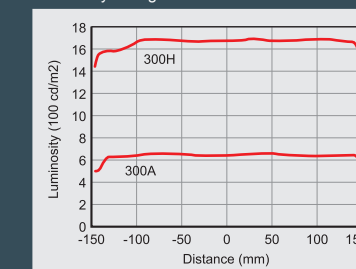
When the light-level is high and the light is left continually on, we recommend air-cooling the device by blowing air through the M5 hole.

Luminosity Characteristics of the LND-300A-DF/300H-DF

As shown on the chart, both types have bright, uniform lighting. The H Series is more than double the intensity of the A Series in a more tightly focused area.



Luminosity change in the x direction



Luminosity change in the y direction

